

FOR CONTINUATION, SEE DOCUMENT 2.9C




AA19 STAFFORD ROAD

EXISTING FIELD ACCESS CLOSED

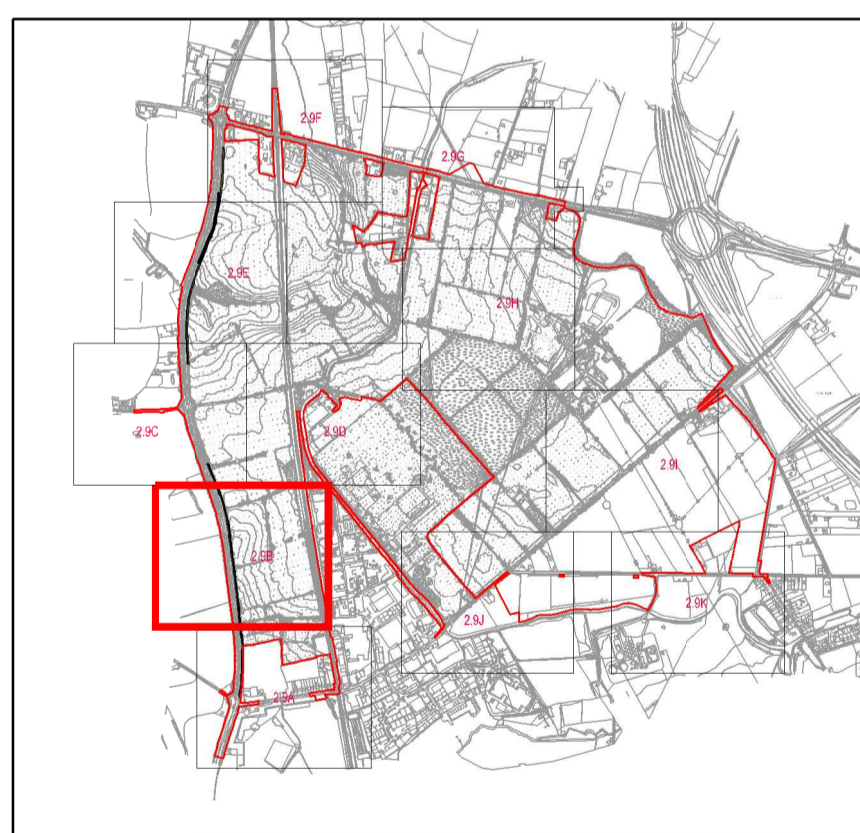
EXISTING ACCESS CLOSED

FOR CONTINUATION, SEE DOCUMENT 2.9A

KEY

-  ORDER LIMITS
-  FOOTWAY / CYCLEWAY
-  VERGE / GRASS

NOTE: LIMITS OF DEVIATION SHOWN ON THE WORKS PLANS (DOCUMENT SERIES 2.2) AND SET OUT IN ARTICLE 4 OF THE DEVELOPMENT CONSENT ORDER.



- E - 05/06/2018 - RED LINE UPDATED
- D - 08/05/2018 - MINOR AMENDMENTS
- C - 20/03/2018 - MINOR AMENDMENTS
- B - 02/03/2018 - RED LINE UPDATED
- A - FIRST ISSUE



Project  
THE WEST MIDLANDS RAIL FREIGHT  
INTERCHANGE ORDER 201X

Drawing Status  
SUBMISSION

Drawing Title Drawing Size A1  
GENERAL ARRANGEMENT PLAN  
102

Regulation Document  
5 (2) (o) 2.9B

Drawn NW Date: JUNE 2018 Scale: 1:1000 Reviewed JF  
Drawing No. WSP-70001979-GA-102 Rev. E